

Broadband in Rural America

From
The rural prospective



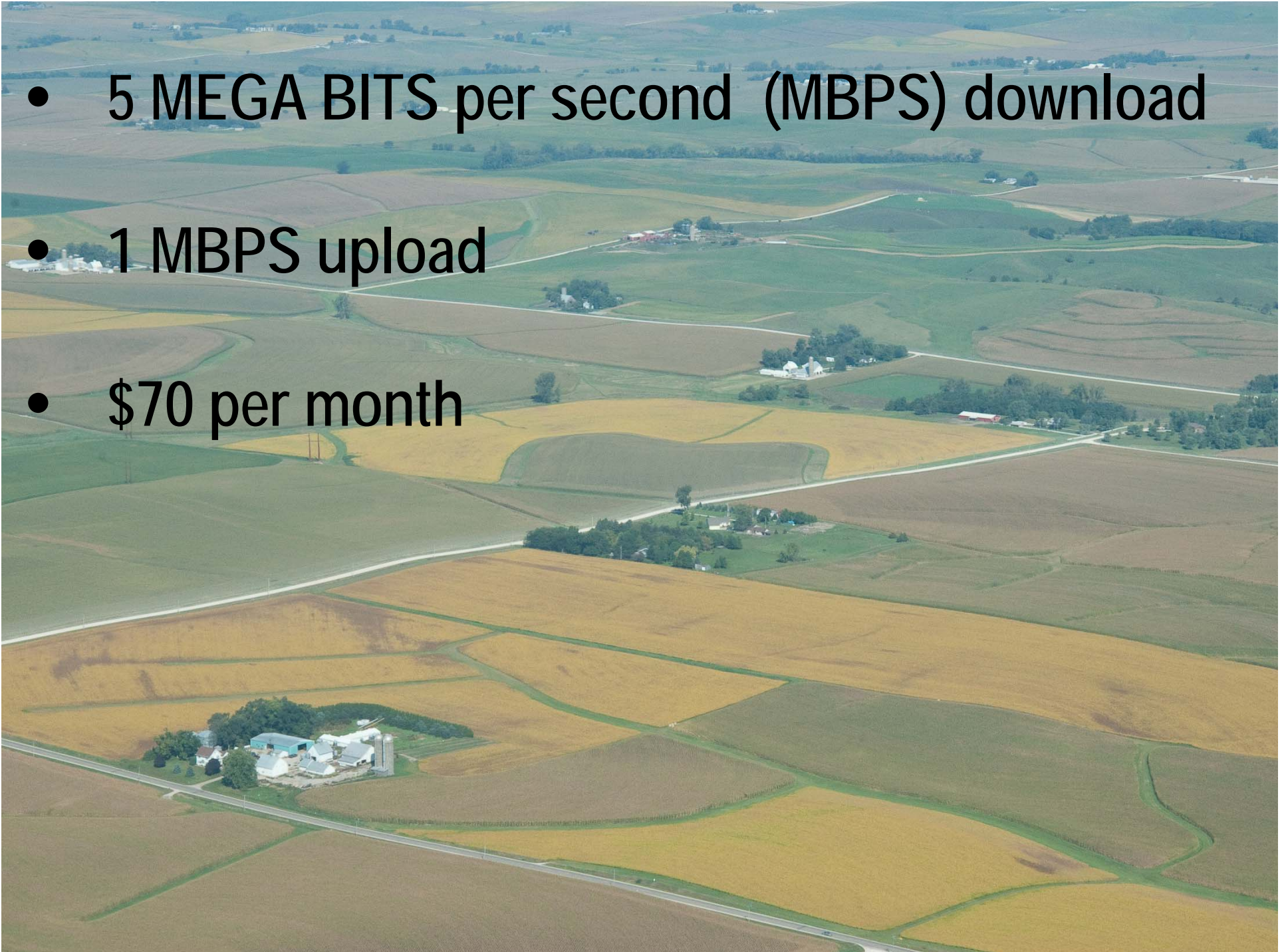
Iowa

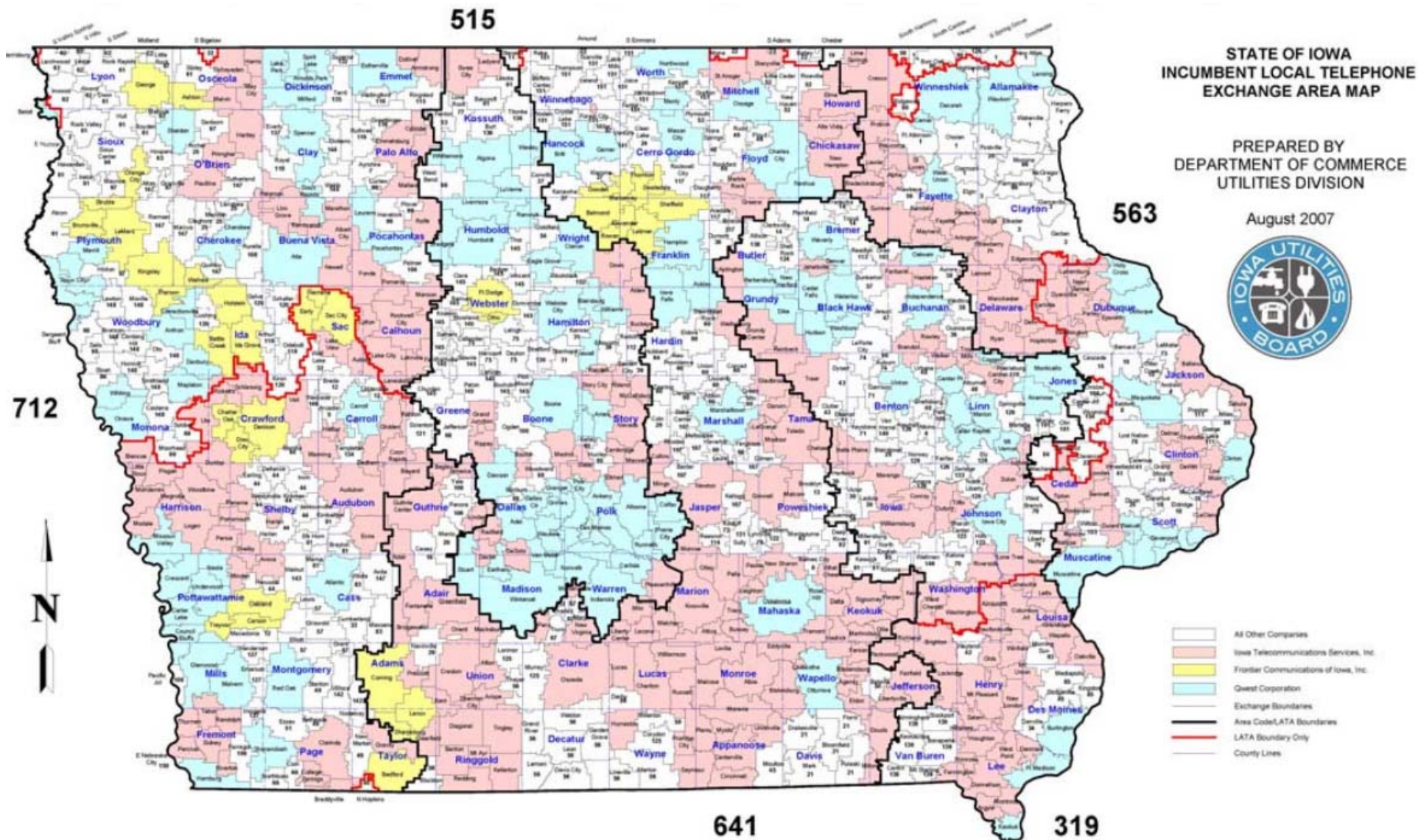


Benton county



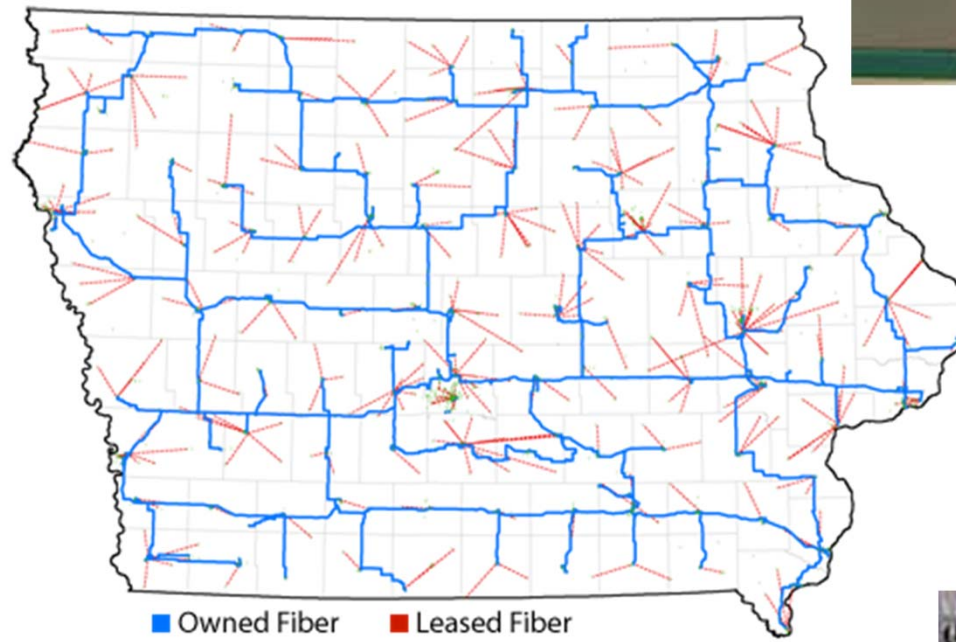
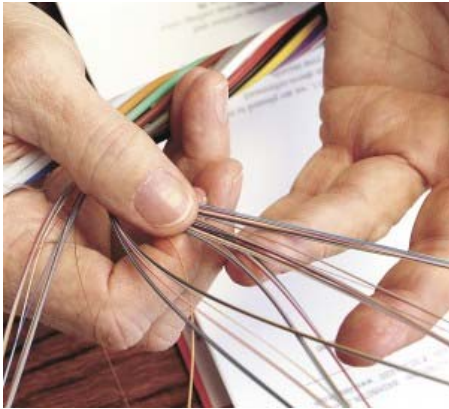
- 5 MEGA BITS per second (MBPS) download
- 1 MBPS upload
- \$70 per month





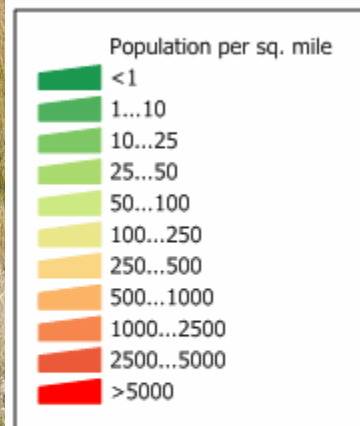
130

*locally owned telephone cooperatives
in Iowa*

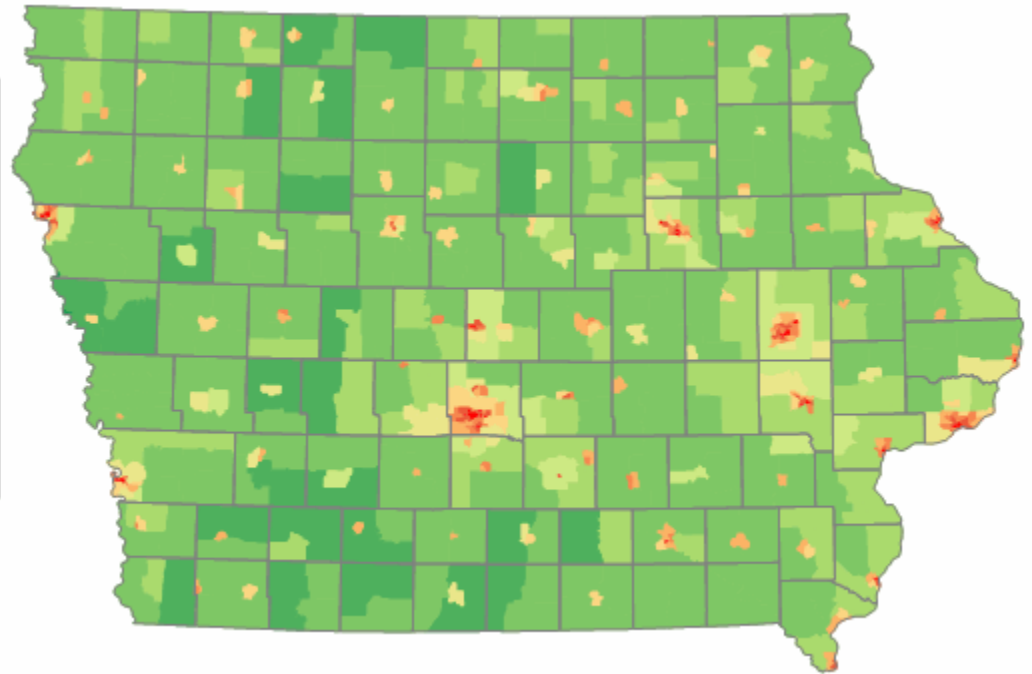





**Low population density
Older infrastructure
= expensive market**

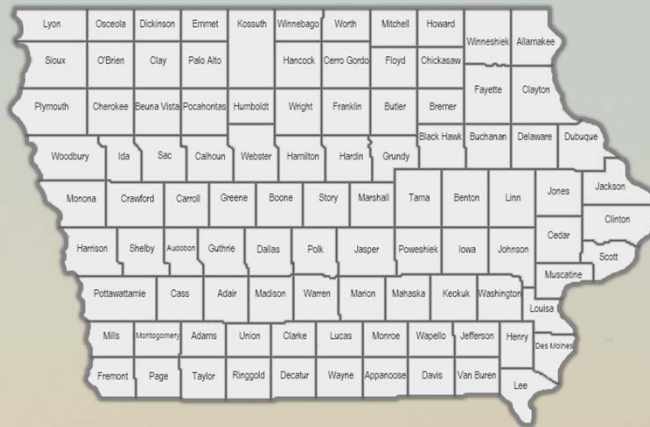


Source: U. S. Census Bureau
Census 2000 Summary File 1
population by census tracts.



- 
- A landscape photograph showing a dark, textured field in the foreground, possibly a crop field. In the middle ground, there are rolling hills and a few scattered trees. The sky is filled with large, soft clouds, with a warm, orange-pink glow from the setting or rising sun. The overall mood is somber and atmospheric.
- Stifled economic expansion
 - Expensive advertising
 - Unhappy customers

- 
- **Customer pressure for upgrades**
 - **Local referendums on internet and telephone services**



THANK YOU