

THE FOUNDATION OF SUSTAINABLE AGRICULTURE – THE SOIL.

John Larson
CEO

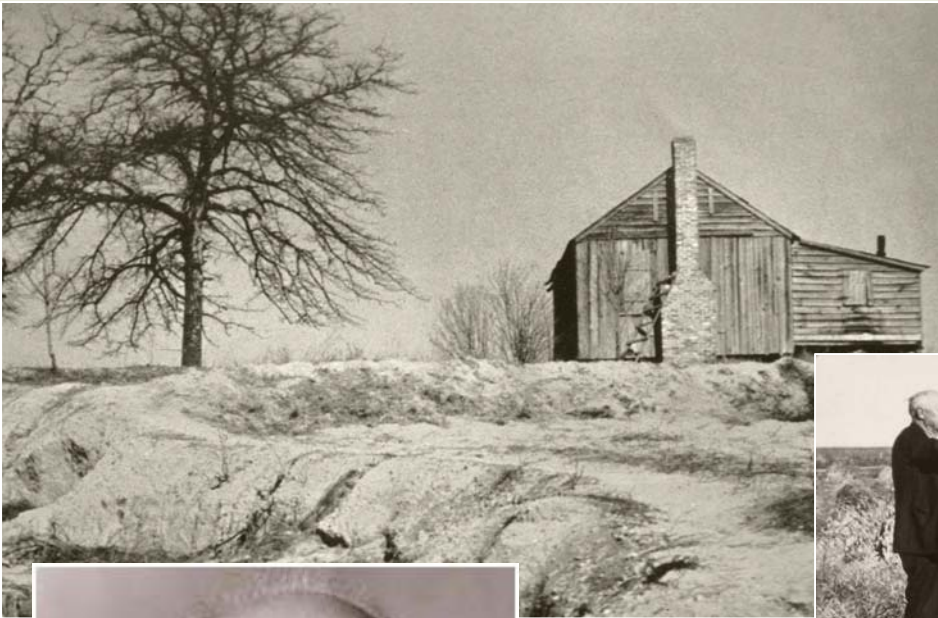
National Association of Conservation Districts

Farm Foundation Forum: Soil Renaissance
July 16, 2014



HISTORY OF THE CONSERVATION MOVEMENT





“Take care of the land and the land will take care of you.”

LOCAL INPUT AND GUIDANCE

- 1937 – President Roosevelt sends out model conservation district law
- Brown Creek, N.C., becomes first conservation district
- 1946 – NACD founded



WHY WE ARE HERE

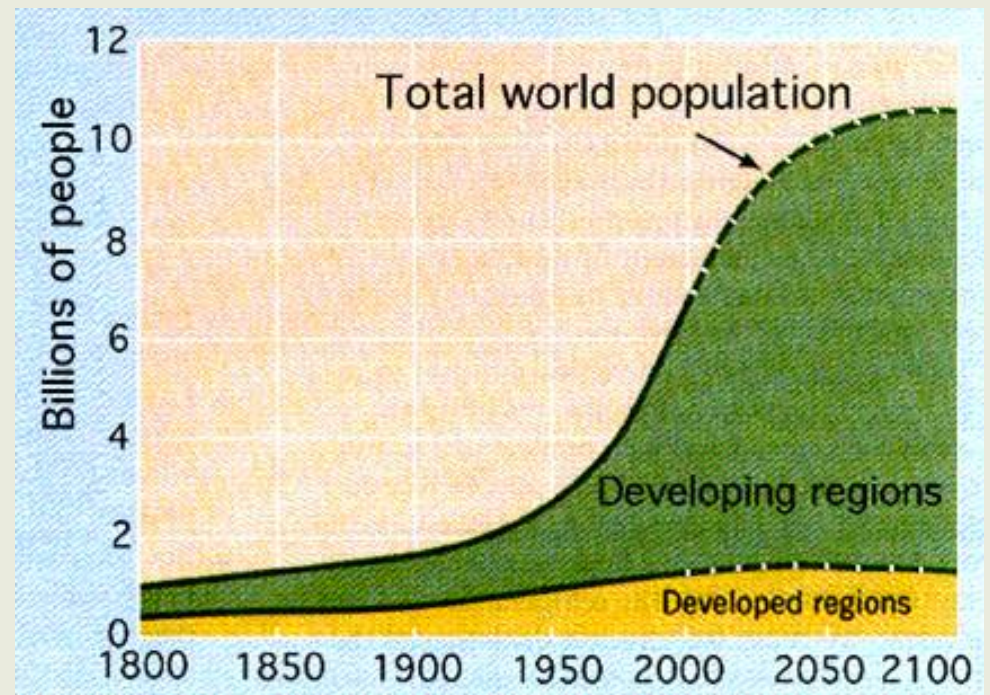
Today:

- 3,000 conservation districts
- 17,000 elected or appointed district officials
- 50-plus state and territorial associations.
- Work closely with NRCS, other nonprofits and corporate sector



WHY WE ARE HERE

- 9 billion people by 2050
- Dramatic increases in food production
- How will we do that...and protect air, soil, water, wildlife?



WHY WE ARE IMPORTANT

THE KEY =

Voluntary, locally-led, incentives-based
approach to conservation

WHY WE ARE IMPORTANT

Our Role:

Conservation districts are working at the local level to help implement sustainable conservation measures helping landowners reduce their carbon footprint and conserve the resource that is the foundation of sustainable agriculture – **the soil.**

SOIL HEALTH

- Erosion and Sediment Control
 - Partnering with NRCS on Soil Health Initiative
- Promotion of key principles of soil health
 - Using plant diversity to increase diversity in the soil
 - Managing soils more by disturbing them less
 - Growing a living root throughout the year
 - Keeping the soil covered as much as possible



United States Department of Agriculture
Natural Resources Conservation Service

SOIL HEALTH

Cover Crops

- Proactively supporting national sodsaver amendment
- Promotion of CRP, EQIP, and other NRCS funds to increase cover crop use



SOIL HEALTH

- **Hosting the NACD Soil Health Forum and Conservation Tours in Indianapolis, IN - July 21 & 22**
 - Soil health industry panel
 - Leaders in NRCS, EPA, IN Dept. of Agriculture
 - Soil Health Networking Event (20 organizations/companies represented)
 - Tours of 3 farms operated by Indiana farmers leading in soil health

QUESTIONS?

Contact:

John Larson

John-Larson@nacdnet.org

202-547-6223

www.nacdnet.org

