

Human health and animal health intrinsically linked



**We make food more abundant, affordable
and safe**

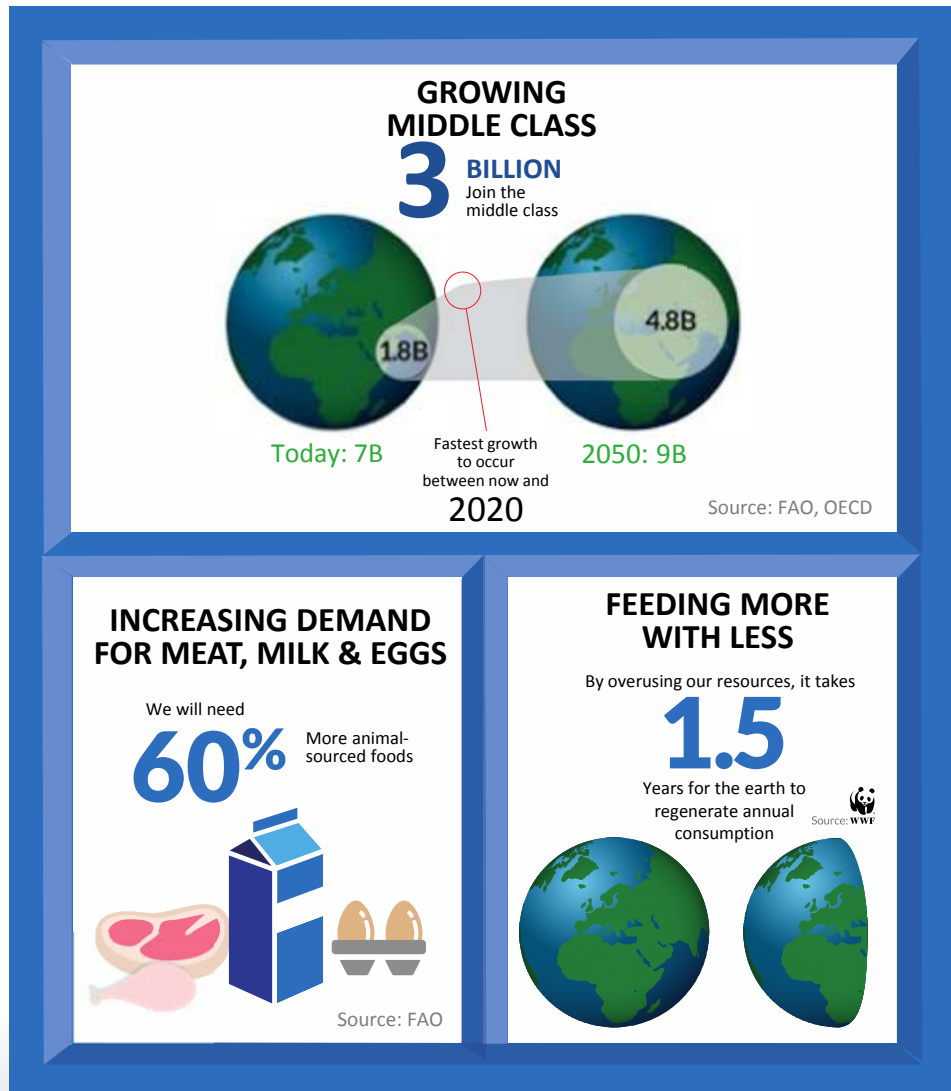
Lilly

Human Health begins with **Nutrition**



GMAFCANON00113

The external landscape



- Increased food output required
- Environmental constraints
- Emerging animal diseases
- Animal welfare concerns
- Food chain declarations
- Consumer trust

An Urgent Window of Time

FDA Guidance 209/213

- This approach takes **the right steps** ensure long-term effectiveness of antibiotics for animals and humans
- Strong **collaboration** between FDA and AHI
- Industry will **comply** with voluntary approach – labels then become only legal option for use
- Expanded **veterinary oversight** is critical to ensure judicious use and animal welfare
- Coordinated **implementation** / education and outreach will be critical for success
- Clarity on **VFD Modernization** will be a key milestone

Actions taken on antimicrobial stewardship

- Implementation of a Global Antimicrobial Use Policy
 - Voluntary narrow shared-class antibiotics to therapeutic use only
 - No longer promote growth promotion / production claims for shared-class antibiotics
 - Advocate for development of animal-use only antibiotics
 - Support and expand veterinary oversight under local frameworks
 - Support validation, transparency, education
- Heavily investing in alternatives to lessen reliance on shared-class antibiotics (animal-use only, enzymes, vaccines, husbandry, analytics)
- Significant outreach to clarify & prepare customers for transition
- Developing policies aligned with 209/213 across the food chain

In closing

- Antibiotics will remain highly important to animal agriculture, animal welfare and food security & we all have a responsibility to take actions to preserve their effectiveness
- 209/213 will have a significant impact on the judicious use of antibiotics
- Efforts by Farm Foundation will play a vital role in successful implementation of 209/213