

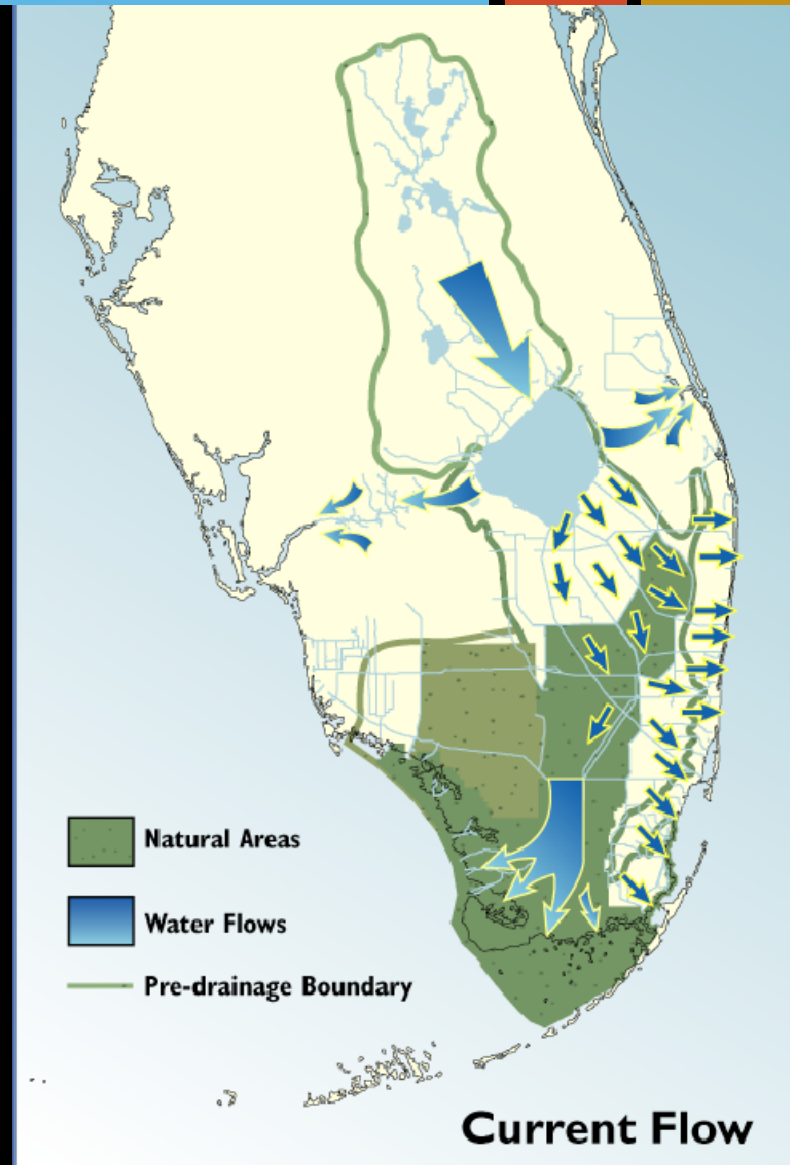


# Designing a Payment for Environmental Services Program on Working Ranchlands: Lessons Learned

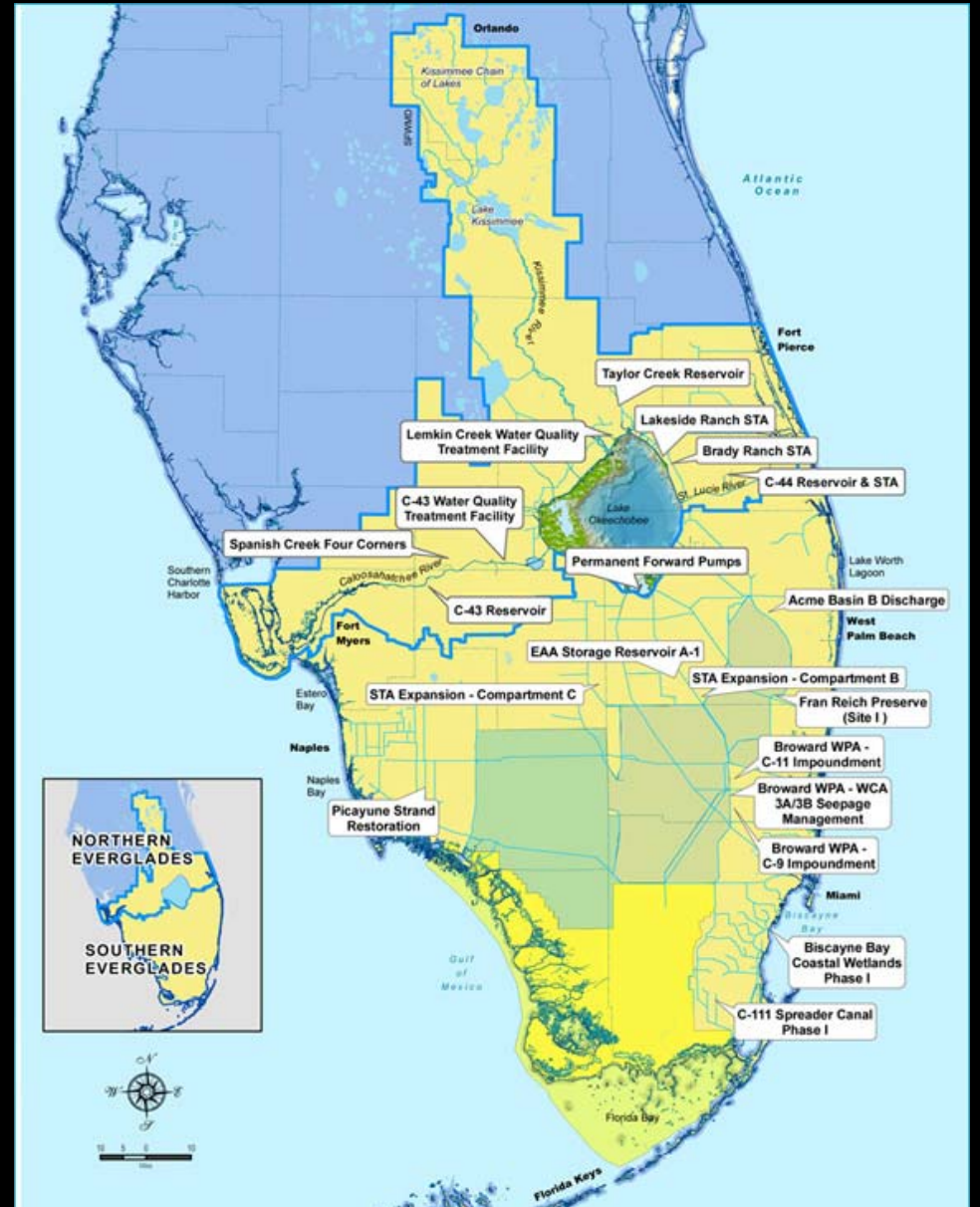
Sarah Lynch, Director, WWF  
&  
Director of the Florida Ranchlands  
Environmental Services Project  
(FRESP)



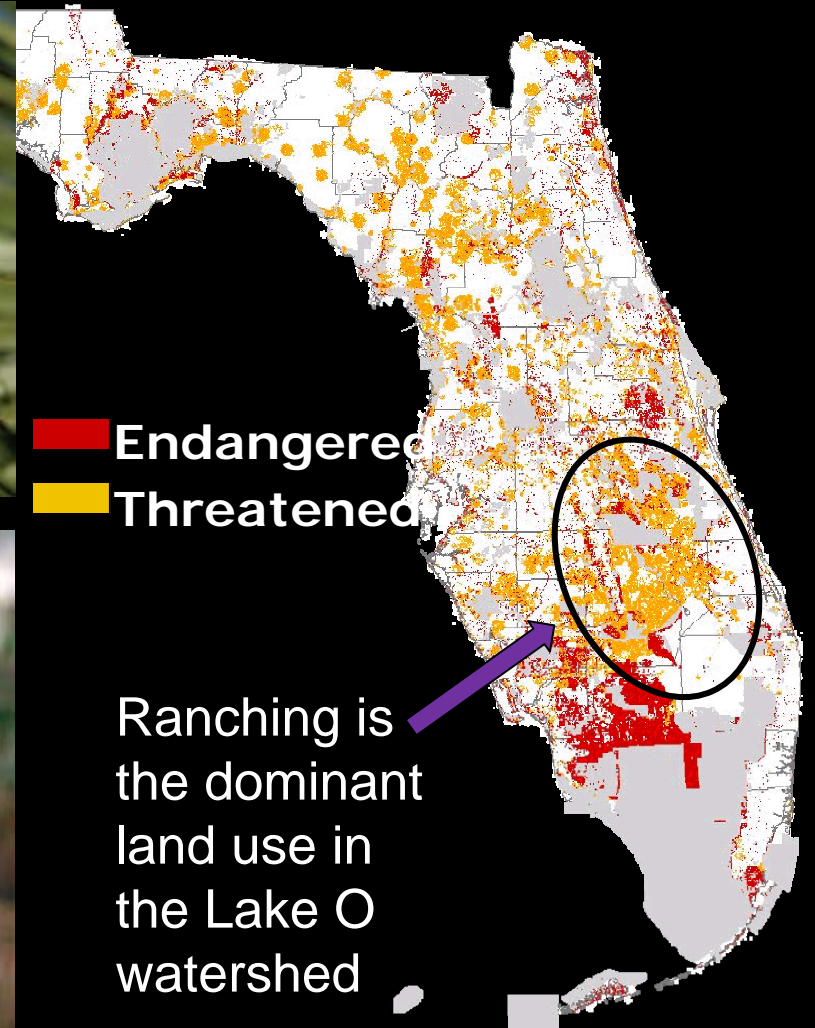
# The Northern Everglades & Estuaries are plagued with water quality & quantity problems, land conversion, & habitat loss



# Large scale regional public works are being planned to address water quality and quantity issues



# Ranchlands provide habitat for multiple species including many that are threatened and endangered



Endangered  
Threatened

Ranching is the dominant land use in the Lake O watershed



# 2005 launched FRESP to answer question could water management services be generated cost-effectively on ranchlands?



# Goal of FRESP -- to design on working ranchlands a water management PES program

Culverts & riser boards



Pumps



- Utilizes/modifies existing infrastructure;
- Profitable to ranchers;
- Cost-effective for taxpayers;
- Feasible to administer;
- Based on credible documentation; and
- Compliments existing state and federal programs.



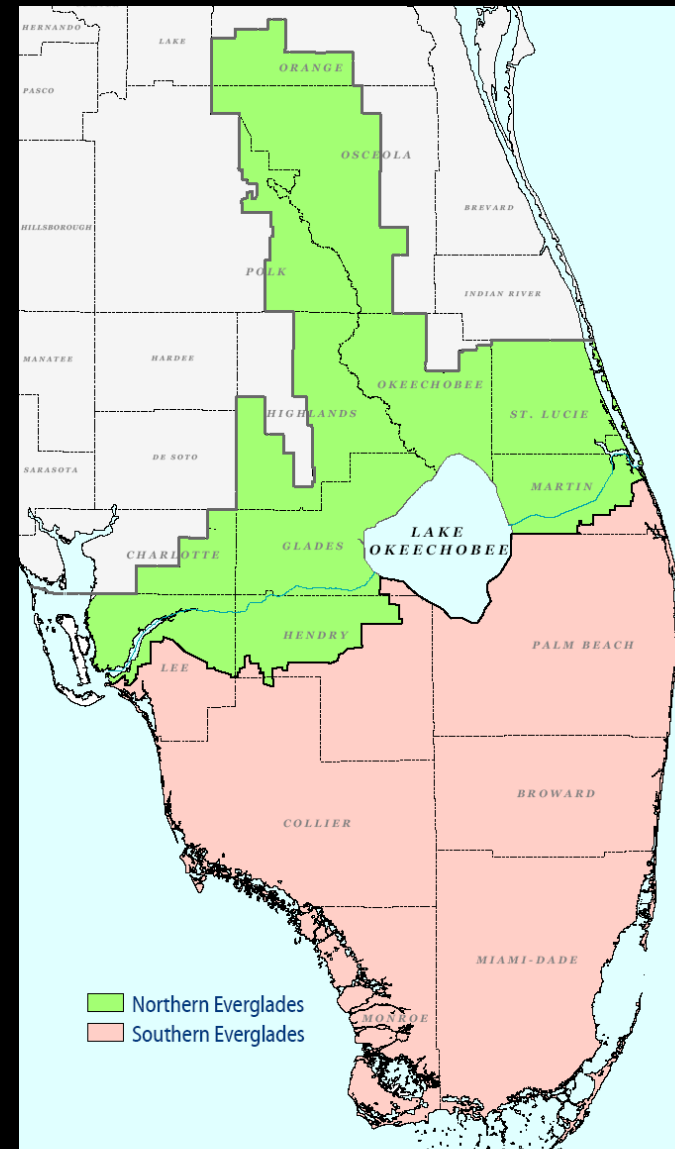
Ditch networks



Impoundments

# Launched in Jan 2011: Dispersed Water Management -- Northern Everglades & Estuaries PES Program

- Program of the SFWMD
- TA provided by NRCS & FDACS
- Goal to build up to 450,000 Ac Ft of water retention
- 10 yr Contracts
- Reverse auction bid
- First Solicitation
  - Estimated obligation of \$43 mill over 10 yr life of contract (capital & annual service payment)



# Critical elements in designing the NE-PES Program included....



## Buyer(s) Preferences

- Preferred predictable payments
  - Pay same service payment amount in low and high rainfall years;
  - Contract is for option to retain water
- Documentation of Service
  - Contract compliance vs actual volume of water retention

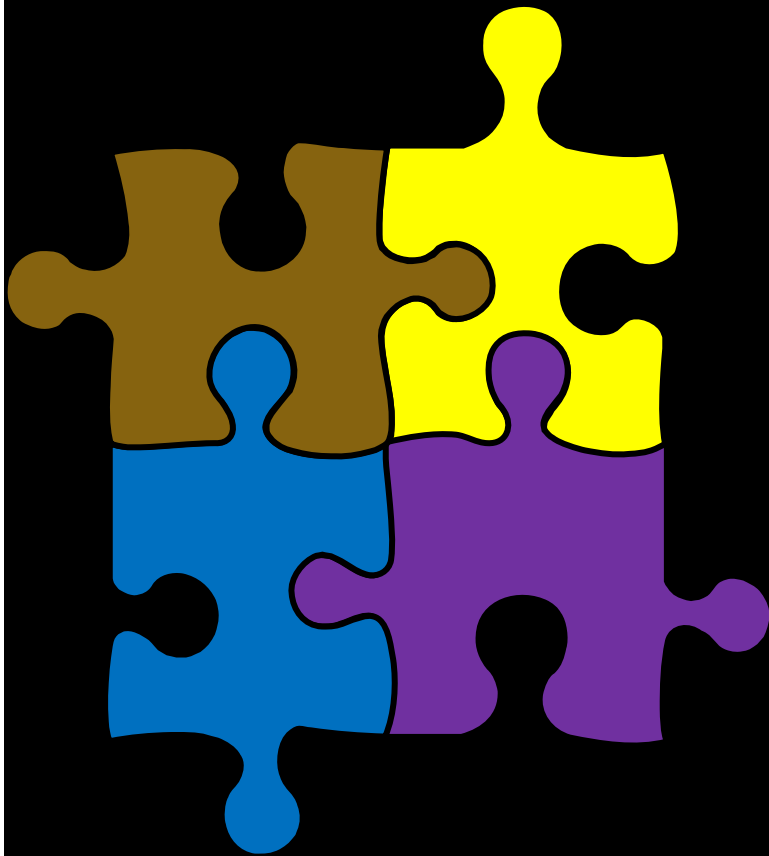
# Critical elements in designing the NE-PES Program included....



## Pilot Projects

- “Learn by doing”
- Developed “good enough” procedures
- Identified hurdles to watershed scale program implementation
- Sought ways to reduce transaction costs

# Critical elements in designing the NE-PES Program included....



## Addressing complex web of constraints

- Agricultural production systems & markets;
- Regulations--county, state and federal;
- Ranch & ranch family specific characteristics;
- Weather; and
- Public perception

# Critical elements in designing the NE-PES Program included....

## Engaging diverse partners

- Many perspectives, skills, & resources are needed to create a viable PES program design



Participating Ranchers



**NRCS** Natural Resources Conservation Service



# Questions?

Sarah Lynch  
202.494.4781

[Sarah.lynch@wwfus.org](mailto:Sarah.lynch@wwfus.org)

South Florida Water  
Management District

[www.sfwmd.gov](http://www.sfwmd.gov)

- >Business
- >Procurement
- >Current solicitations
- >Dispersed Water  
Mgt/NE-PES

