



SESSION FOUR: URBAN CREEP AND FARMLAND/ GRAZING LAND LOSS



**TERI
MURRISON**

MODERATOR

**EXECUTIVE DIRECTOR,
IDAHO COALITION OF LAND TRUSTS**

Urban Creep, Farmland and Grazing Loss

Farm Foundation Round Table
Boise, June 9, 2022



Teri Murrison, Executive Director, Idaho Coalition of Land Trusts
tmurrison@idaholandtrusts.org, 208-258-4752

3 Questions

1. Are we balanced between ag production and growth?

2. Who wins and or suffers, as a result?

3. How do we solve the issue?

Ag's Still Influential in Idaho (but less so)



Teri Murrison, Executive Director, Idaho Coalition of Land Trusts
tmurrison@idaholandtrusts.org, 208-258-4752



Teri Murrison, Executive Director, Idaho Coalition of Land Trusts
tmurrison@idaholandtrusts.org, 208-258-4752



Teri Murrison, Executive Director, Idaho Coalition of Land Trusts
tmurrison@idaholandtrusts.org, 208-258-4752

Growth

- Idaho population
~1.9M *Us Census, US News & World Report, Dec. 2021*
- 1st in US population growth 5th year in row (53,000 new residents, 2.9% increase) *Us Census, AP Dec. 2021*
- 3 Treasure Valley cities in US top 15% growth (Nampa, Meridian, Caldwell)



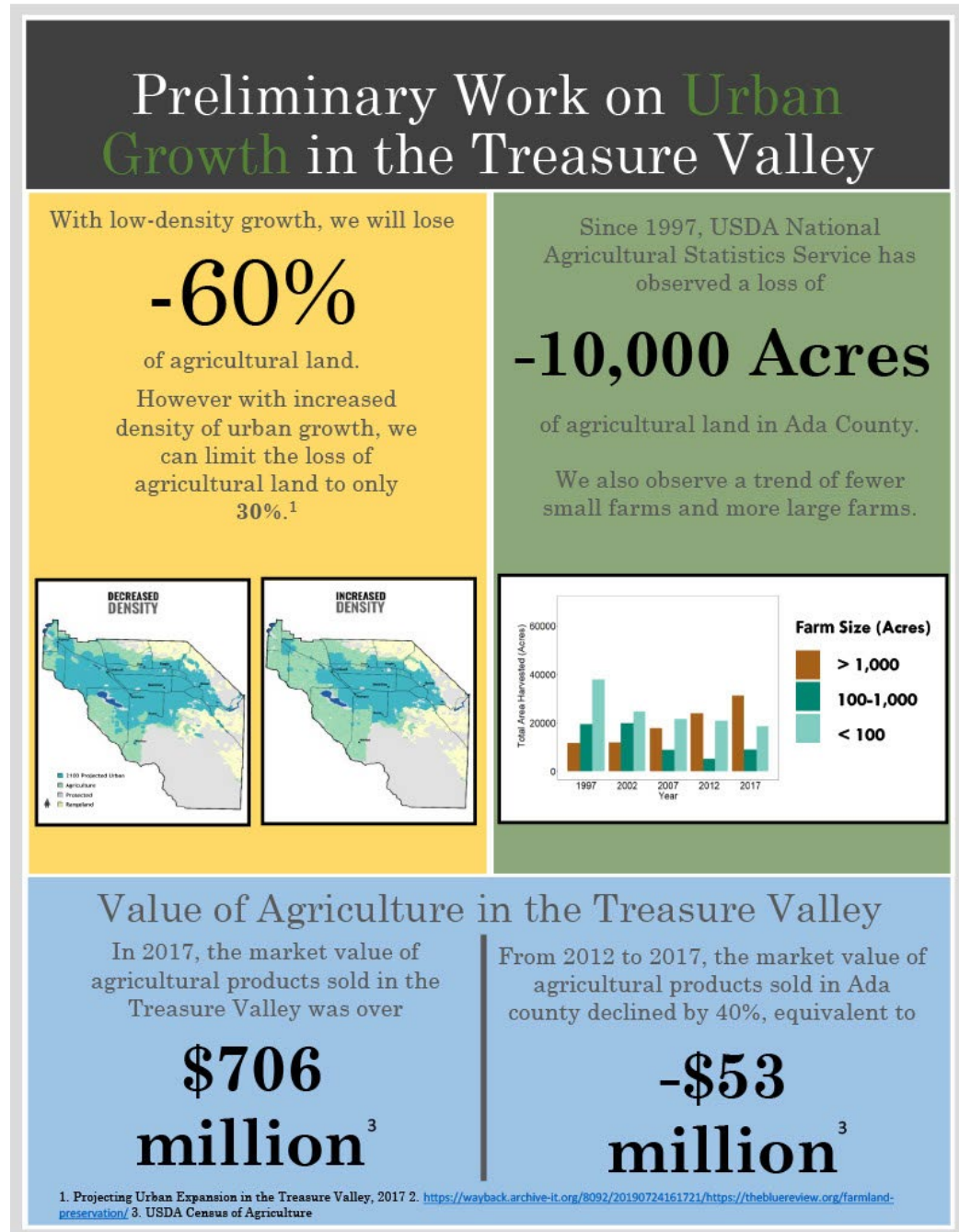
Teri Murrison, Executive Director, Idaho Coalition of Land Trusts
tmurrison@idaholandtrusts.org, 208-258-4752

Urban Growth in the Treasure Valley?

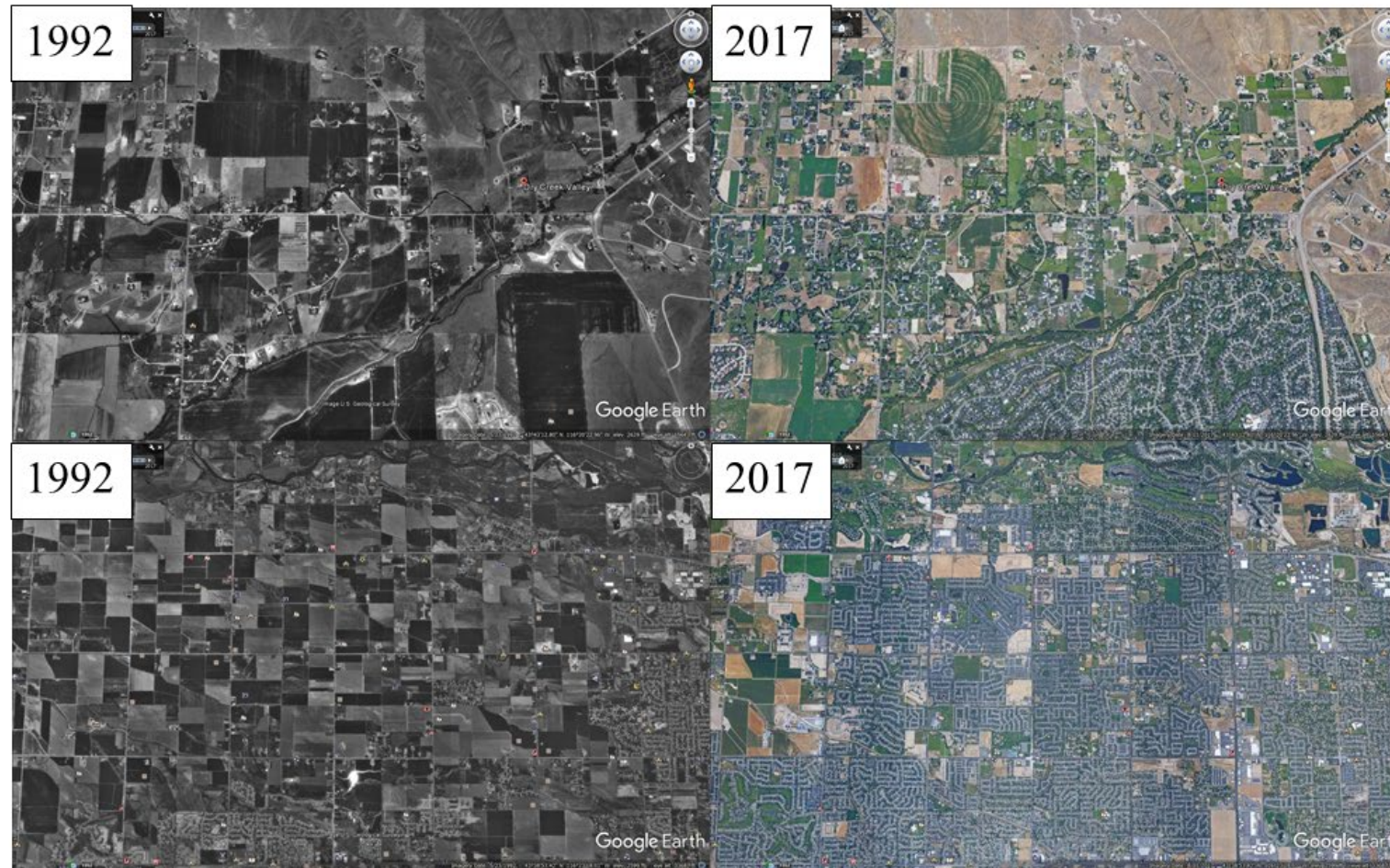
- Est. population growth ~53% from 2018-2040 (688k – 1+M) *Compass, 2040*
- Urban expansion by 2100 1.25M – 1.5M (4.14 people/acre to 5.41 people/acre) *BSU Whitepaper, 2017*
- Ada, Canyon Co. grew 7.8% (726k-781k) from 2021-22

BSU, 2020

Teri Murrison, Executive Director, Idaho Coalition of Land Trusts
tmurrison@idaholandtrusts.org, 208-258-4752



Are we balanced?



Top Panel - Farmland conversion to high-density housing in Dry Creek, in the foothills east of Boise.

Bottom Panel - Suburban sprawl in Meridian, Idaho, in the Treasure Valley, west of Boise.

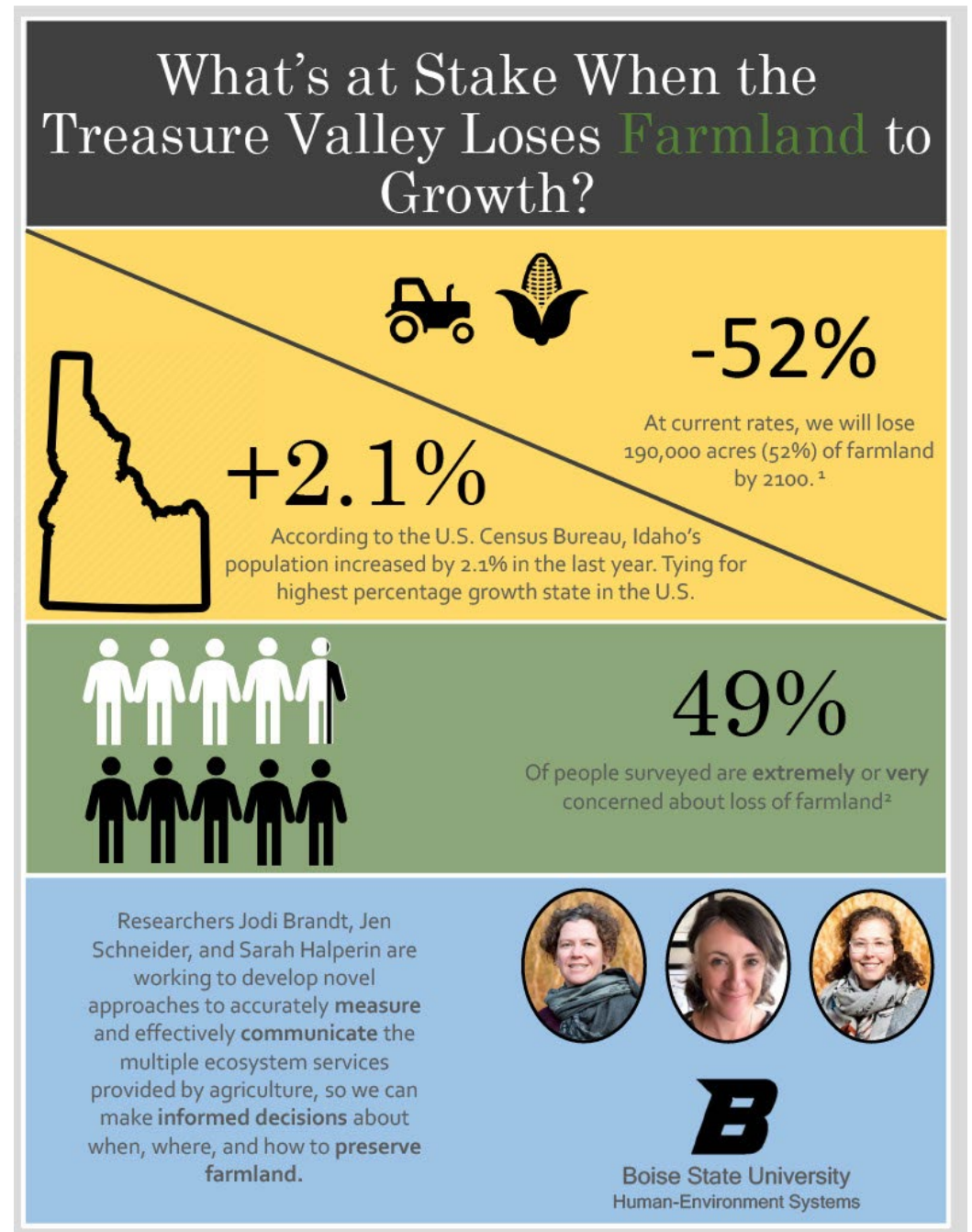
Teri Murrison, Executive Director, Idaho Coalition of Land Trusts
tmurrison@idaholandtrusts.org, 208-258-4752

What's at stake?

- Economy suffers
- Water supply at risk
- Fire danger increased as development pushes into AOI, WUI
- Amount of food grown here decreases
- Ecosystem services reduced

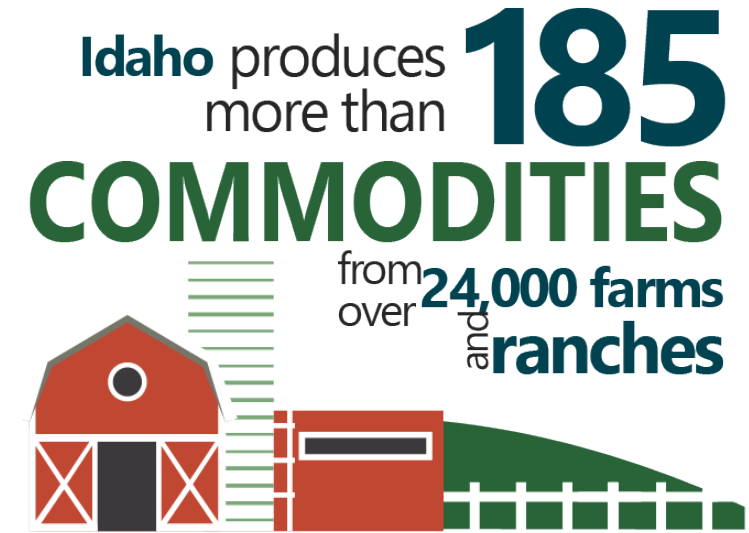
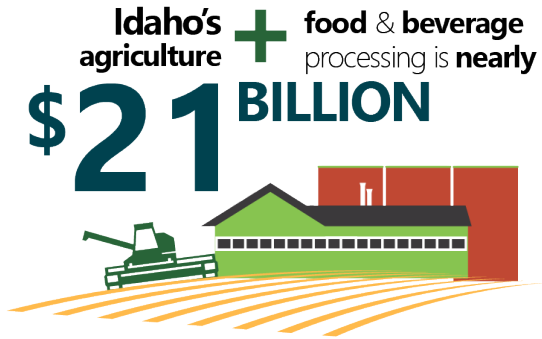
BSU, 2020

Teri Murrison, Executive Director, Idaho Coalition of Land Trusts
tmurrison@idaholandtrusts.org, 208-258-4752



What's at stake in Idaho? Ag Production

ISDA Infographics, 2022



What's at stake in Canyon County?

American Farmland Trust, 2022

Canyon County Area of Impact		Acres	2021 acreage of top 12 crops in Canyon County				2020 Crop Value (\$/acre) ³			
Crop ²	Full county	Areas of Impact (Aols)	% in Aols	2020 Crop Value in Aols	Annual Farm Gate Loss	Economic Impact (6x FG) ^{4,5}				
Nampa	45,117	Winter wheat	22,572	9,386	41.6%	495	\$ 4,646,070	\$ 107,528	\$ 645,167	
Caldwell	30,163	Alfalfa	42,039	11,926	28.4%	707	\$ 8,431,682	\$ 195,141	\$ 1,170,848	
Middleton	20,623	Corn	41,112	11,082	27.0%	935	\$ 10,361,670	\$ 239,809	\$ 1,438,852	
Star	6,303	Mint	7,442	2,312	31.1%	2100	\$ 4,855,200	\$ 112,368	\$ 674,207	
Greenleaf	18,397	Sugarbeets	9,459	3,686	39.0%	1985	\$ 7,316,710	\$ 169,337	\$ 1,016,020	
Parma	12,266	Dry beans	5,394	1,791	33.2%	772	\$ 1,382,652	\$ 32,000	\$ 191,999	
Wilder	7,716	Onions	7,158	3,021	42.2%	5297	\$ 16,002,237	\$ 370,353	\$ 2,222,118	
Melba	2,494	Potatoes	4,545	652	14.3%	3276	\$ 2,135,952	\$ 49,434	\$ 296,605	
Notus	8,901	Hops	6,542	1,702	26.0%	10758	\$ 18,310,116	\$ 423,766	\$ 2,542,597	
Wilder	7,716	Orchards	1,479	172	11.6%	0	\$ -	\$ -	\$ -	
		Spring wheat, other grains, pulses	4,497	1,352	30.1%	471	\$ 636,792	\$ 14,738	\$ 88,427	
		Vegetables	2,616	1,095	41.9%	0	\$ -	\$ -	\$ -	
Total	159,696	Total	154,855	48,177	31.1%	Total	\$ 74,079,081	\$ 1,714,473	\$ 10,286,839	
Conversion rate (ac/yr) ¹	1115	1-year loss (acres)		2%		20-year loss	\$ 205,736,784			

¹Boise State University - Land Use Lab

²USDA Cropscape

³2021 Idaho Annual Statistical Bulletin (October 2021), USDA National Agricultural Statistics Service - Northwest Regional Office

⁴University of Georgia - AgSnapshots 2020

2019 data

Teri Murrison, Executive Director, Idaho Coalition of Land Trusts
tmurrison@idaholandtrusts.org, 208-258-4752

**How do we solve
this issue?**



Teri Murrison, Executive Director, Idaho Coalition of Land Trusts
tmurrison@idaholandtrusts.org, 208-258-4752

Urban Creep, Farmland and Grazing Loss

Farm Foundation Round Table

Boise, June 9, 2022



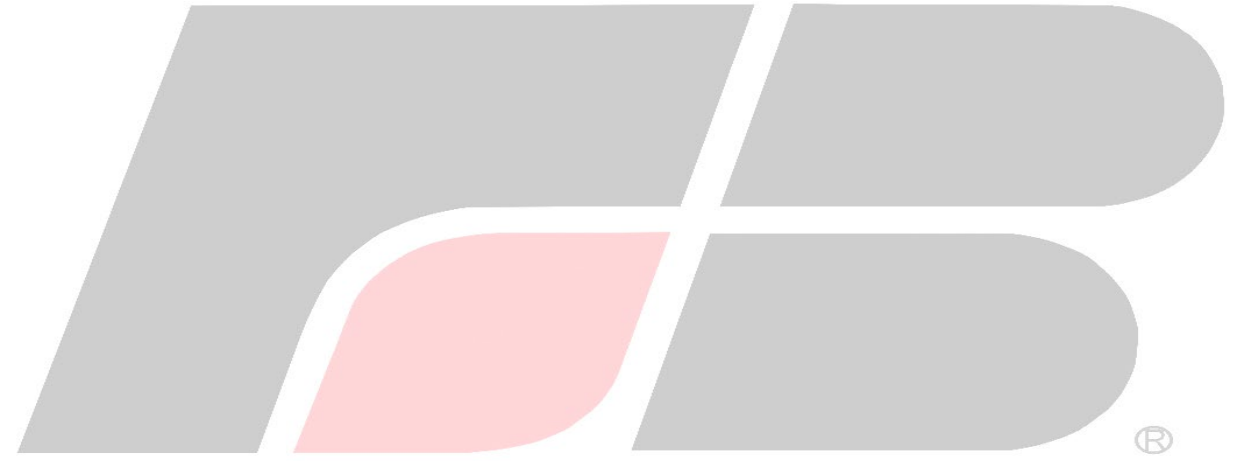
Teri Murrison, Executive Director, Idaho Coalition of Land Trusts
tmurrison@idaholandtrusts.org, 208-258-4752





**BRADEN
JENSEN**

**DEPUTY DIRECTOR,
GOVERNMENTAL AFFAIRS,
IDAHO FARM BUREAU FEDERATION**



Braden Jensen

Deputy Director of Governmental Affairs

bjensen@idahofb.org

208-333-7089

Idaho Farm Bureau Federation®



Organizational Priorities

- Preservation and Protection of Property Rights
- Promotion of Sound Agriculture Policy
- Leadership and Personal Development for Ag Producers



Preserving Agriculture

IFBF Policy #134:

“We support legislation to protect agriculture land through voluntary agreements and programs based on incentives.”



Idaho Farm Bureau Federation®





DREW EGGERS

MINT FARMER, RETIRED





**JAROM
WAGONER**

**MAYOR,
CITY OF CALDWELL**





**MIGUEL
VILLAFANA**

**OWNER/OPERATOR,
VILLAFANA FARMS**

Farm Foundation Round Table

Miguel Villafaña
June 9, 2022





QUESTION AND ANSWER

TERI MURRISON
IDAHO COALITION OF LAND TRUSTS

MIGUEL VILLAFANA
VILLAFANA FARMS

DREW EGGERS
RETIRED MINT FARMER

JAROM WAGONER
CITY OF CALDWELL

BRADEN JENSEN
IDAHO FARM BUREAU FEDERATION

*USE THE MEETING APP
TO SUBMIT A QUESTION
OR QUEUE AT ONE OF
THE MICROPHONES IN
THE AISLEWAY.*

