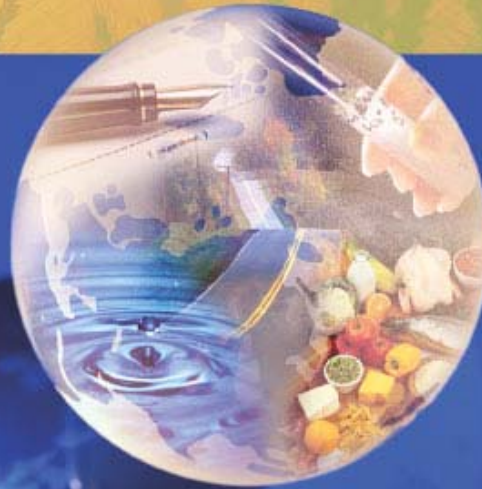


Knowledge
to Thrive

in a
World
of *Change*



Farm Foundation

Industrial Restructuring in Rural
America

June 6, 2005

Washington, DC

Farm Foundation

- Founded in 1933
- Trustees are leaders in agriculture and agribusiness
- Funding
 - Initial endowment
 - Support from individuals, businesses and government agencies
- Every \$1 invested leverages more than \$6

Farm Foundation

- Focus is on agriculture, the food system and rural communities
- Unique in addressing issues significant across agriculture and rural America
- Creates an “agenda-free” environment for discussion and debate of timely issues
- Addresses emerging economic and policy issues

Farm Foundation

- Providing information to public and private-sector decision makers
 - Executive summaries
 - *Farm Foundation Issue Reports*
 - Report distribution to target audiences
 - *www.farmfoundation.org*

Farm Foundation

Program Focus

Environmental and Natural Resources

Globalization

Rural Community Viability

Role of Agricultural Institutions

Consumer Issues

New Technology

Farm Foundation

- **Rural Community Viability**

- Improve dialogue among stakeholders
- Encourage development of leadership, human capital and civic engagement
- Assess development of demographic, economic and social changes
- Explore innovative strategies and governance structures for rural communities and delivery of essential services
- Identify key elements of effective rural policy