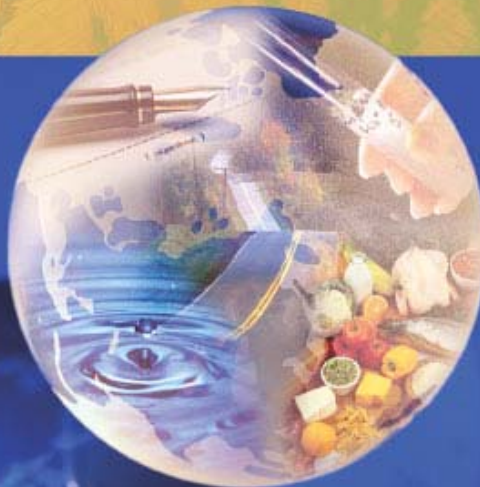


Knowledge
to Thrive

in a
World
of *Change*



Farm Foundation

Modeling U.S. and EU
Agricultural Policy: Focus on
Decoupled Payments

October 4-5, 2004

Washington, D.C.

Farm Foundation

- Founded in 1933
- Trustees are leaders in agriculture & agribusiness
- Funding
 - Private endowment
 - Support from individuals, businesses and government agencies
- Every \$1 invested leverages \$6

Farm Foundation

- Is unique in the agricultural community
- 70-year reputation for objectivity
- Don't lobby or advocate
- Do provide an agenda-free environment for discussion and dialogue on economic and policy issues
- Promote understanding of the relationship among natural resources, human capital, technology, public institutions and society.

Farm Foundation

Program Focus

Environmental and Natural Resources

Globalization

Rural Community Viability

Role of Agricultural Institutions

Consumer Issues

New Technology

Farm Foundation

Why this project?

Globalization Objective

- Evaluate the impact of U.S., foreign and multinational political institutions and economic policy on international commerce in food and fiber.

Agricultural Institutions

- Identify new institutional arrangements with the potential to serve agriculture and the food system more effectively in today's global and fast-changing economy.

Farm Foundation

- Goal: More informed public policy
 - Supply private and public decision makers with informative economic analysis.
 - Identify gaps in research/analysis and set a future research agenda.
 - Increase public understanding of the issues by fostering dialogue and building networks.