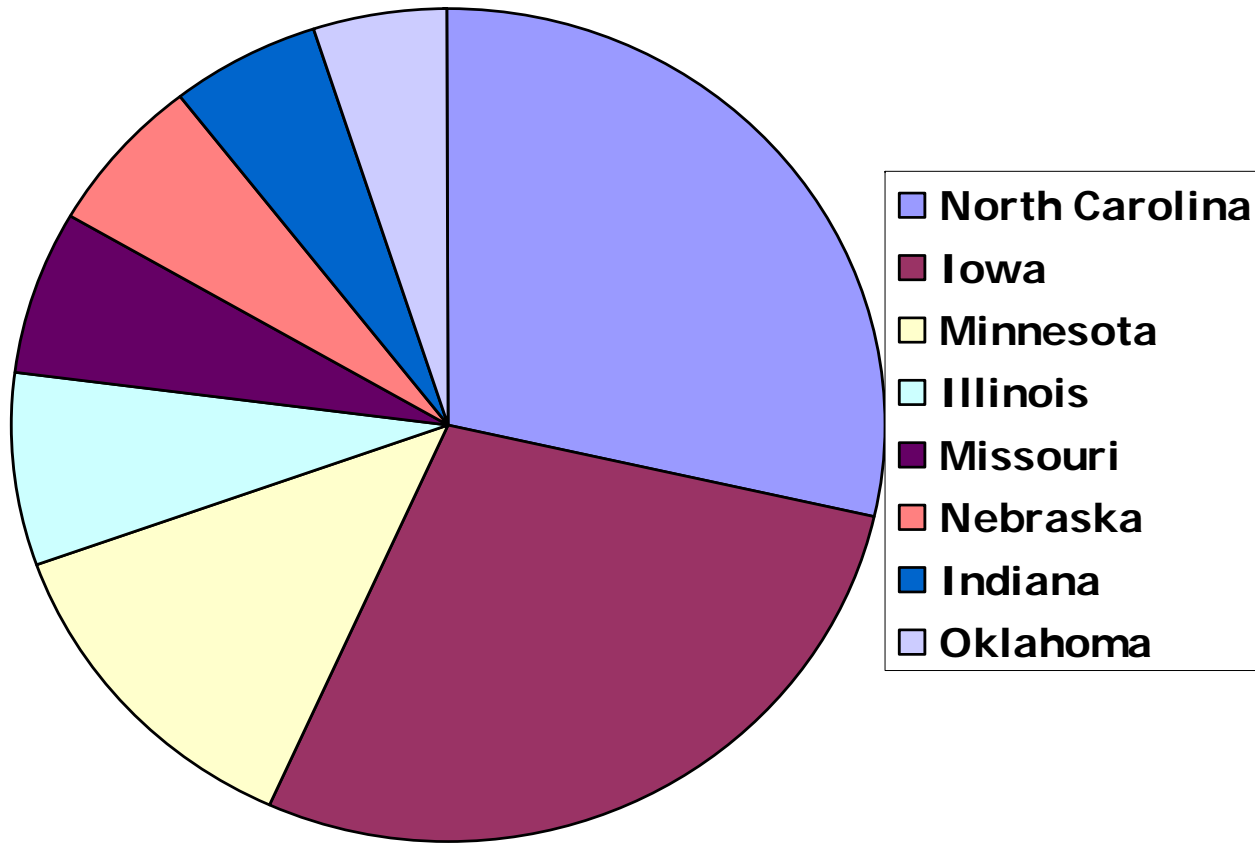


**Additional Slides:  
Impacts of  
Integrated Poultry and Hog  
Production/Processing**

National Public Policy Education Conference  
Fayetteville, Arkansas  
September 17-20, 2006

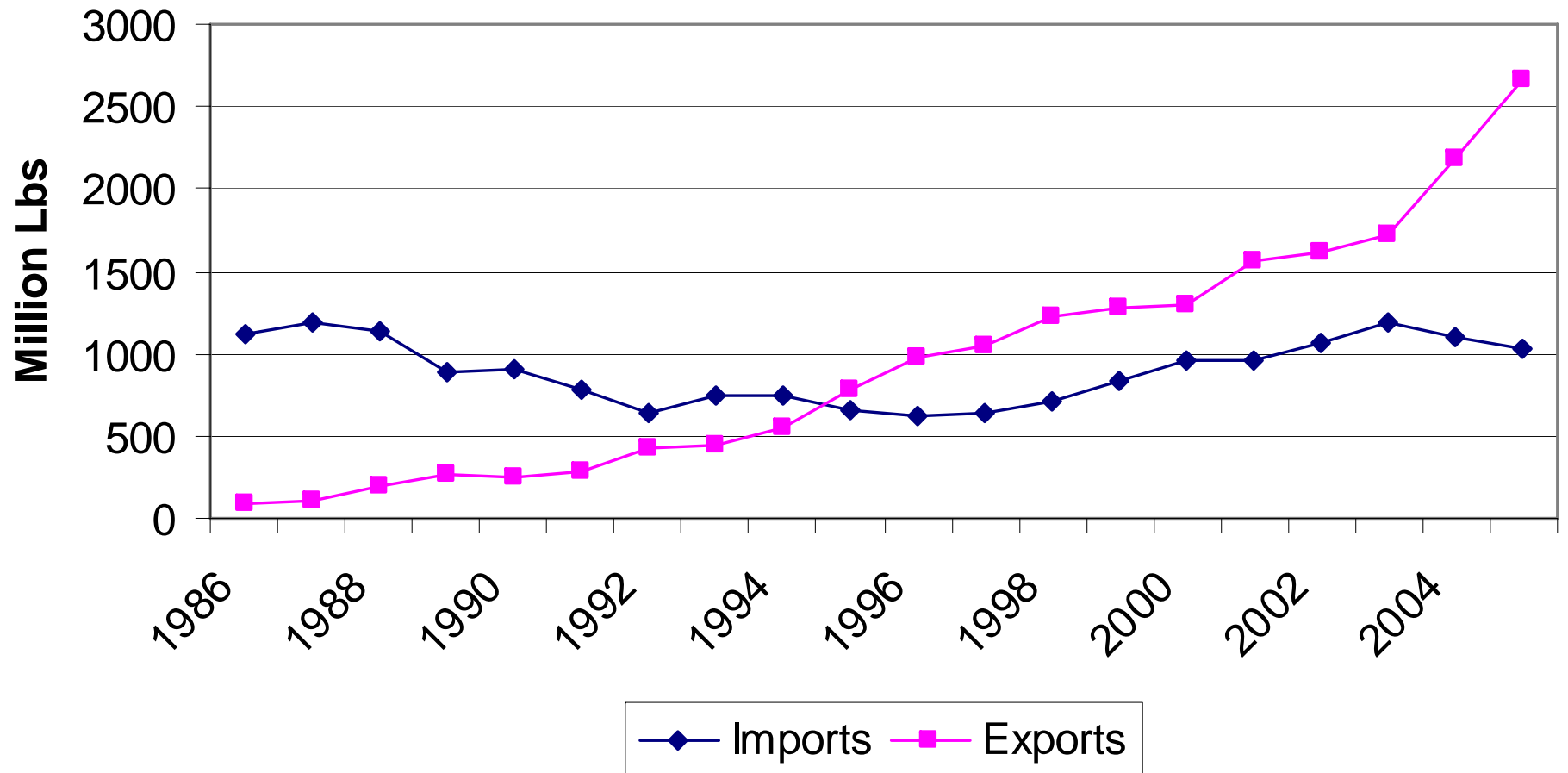
Jim Pease  
Virginia Tech  
[peasej@vt.edu](mailto:peasej@vt.edu); 540/231-4178

# Top 8 States, Hogs & Pigs Sold, 2002



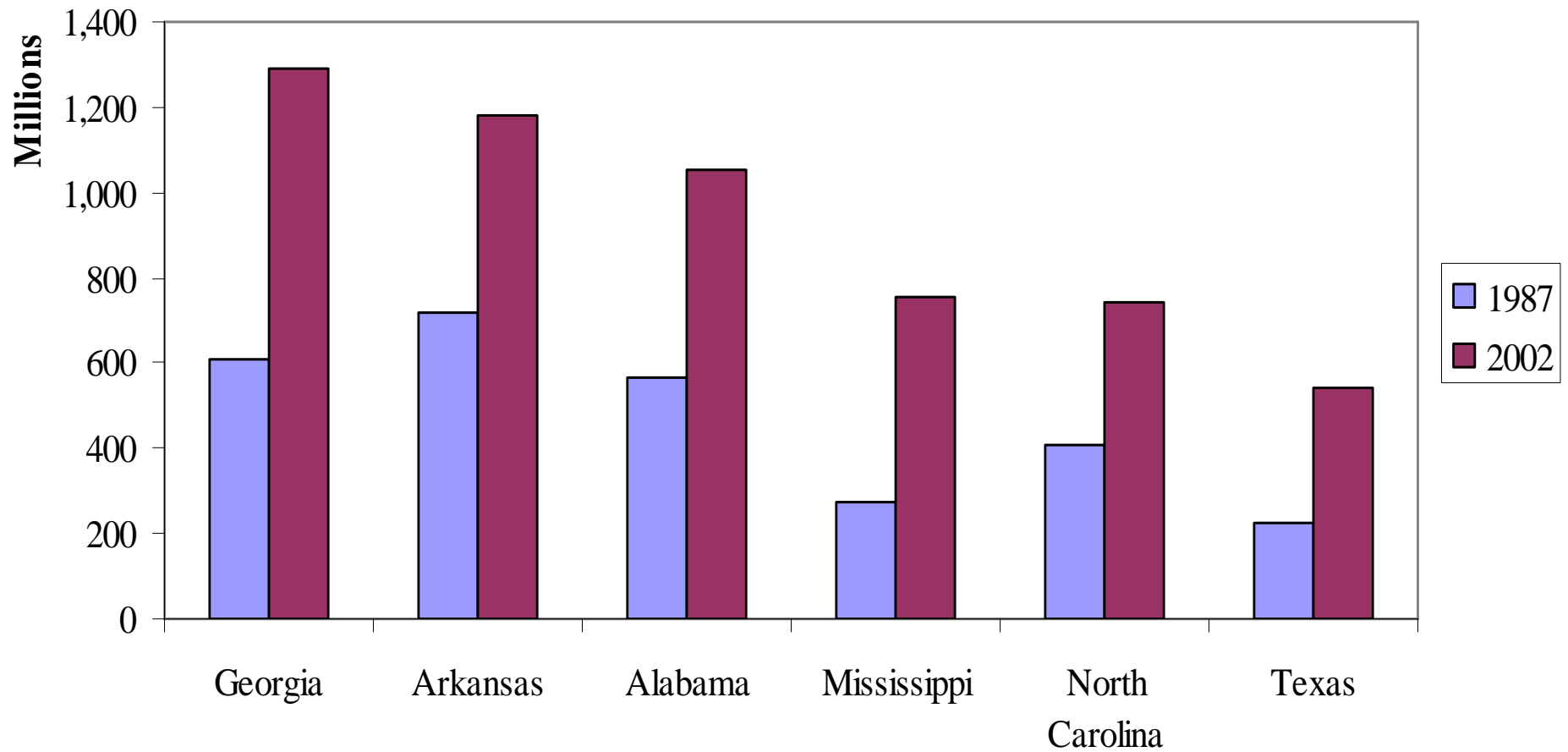
Source: Census of Agriculture

# US Pork Imports & Exports, 1986-2005



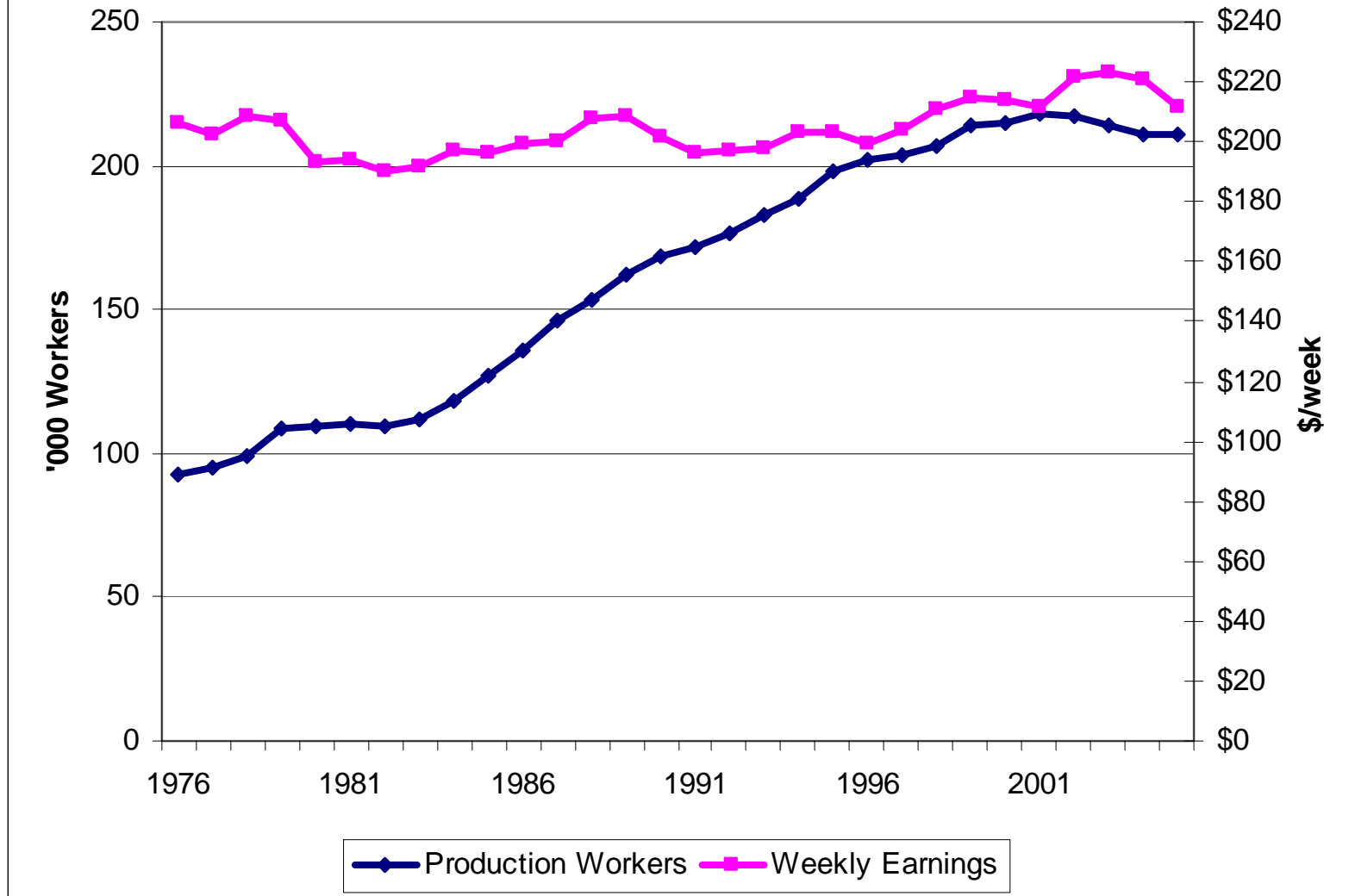
Source: "Economic Impact of U.S. Pork Trade," Glenn Grimes, Ron Plain, Steve Meyer; Dept. of Agricultural Economics Working Paper No. AEWP 2006-3; accessed at <http://agebb.missouri.edu/mkt/exportUSpaper.htm>, Aug. 28, 2006

## Broilers Sold, Top 6 States 1987 & 2002



Source: Census of Agriculture

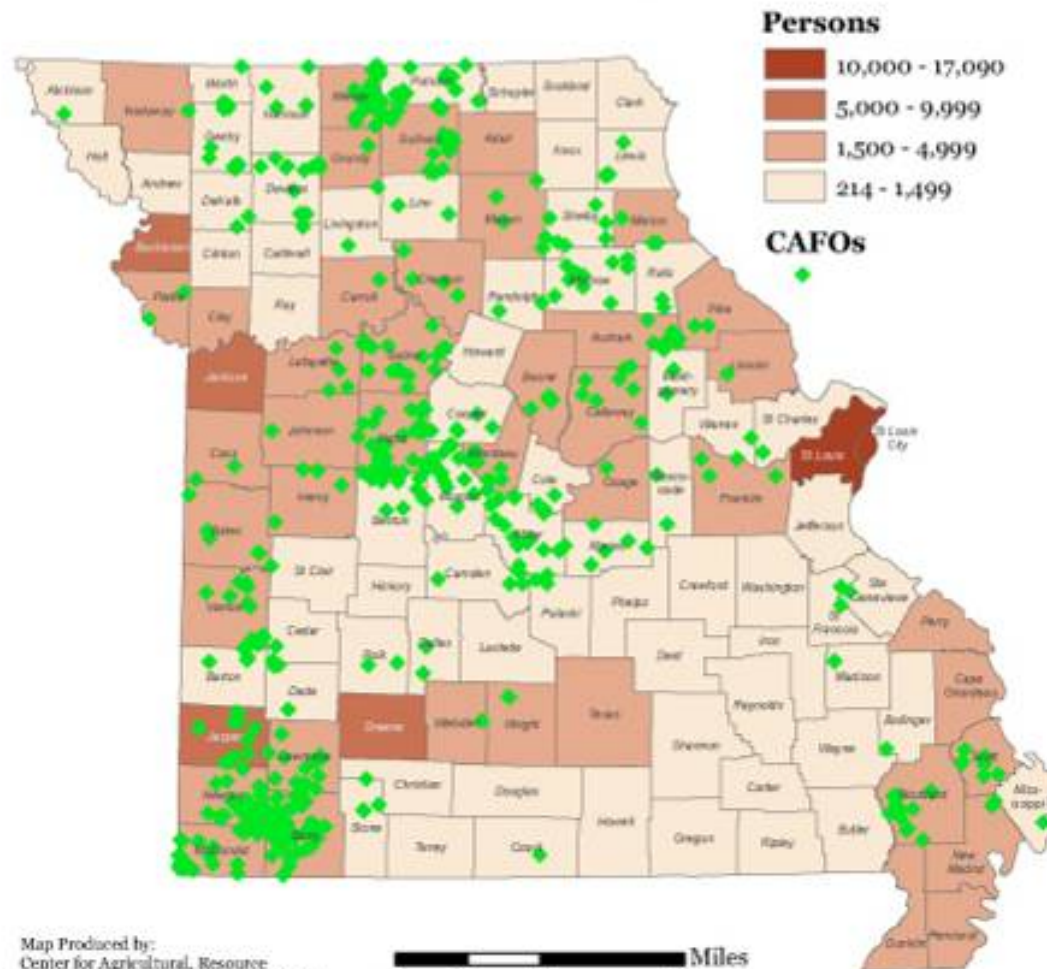
## Poultry Slaughter/Processing Production Workers & Real Weekly Earnings, 1976-2005



Source: US Dept. of Labor, Bureau of Labor Statistics, Current Employment Statistics, accessed Aug. 30, 2006.  
Deflated by CPI 1982-84=100

# Total Agriculture Related Employment by County, 2002

Showing Concentrated Animal Feeding Operations (CAFOs)

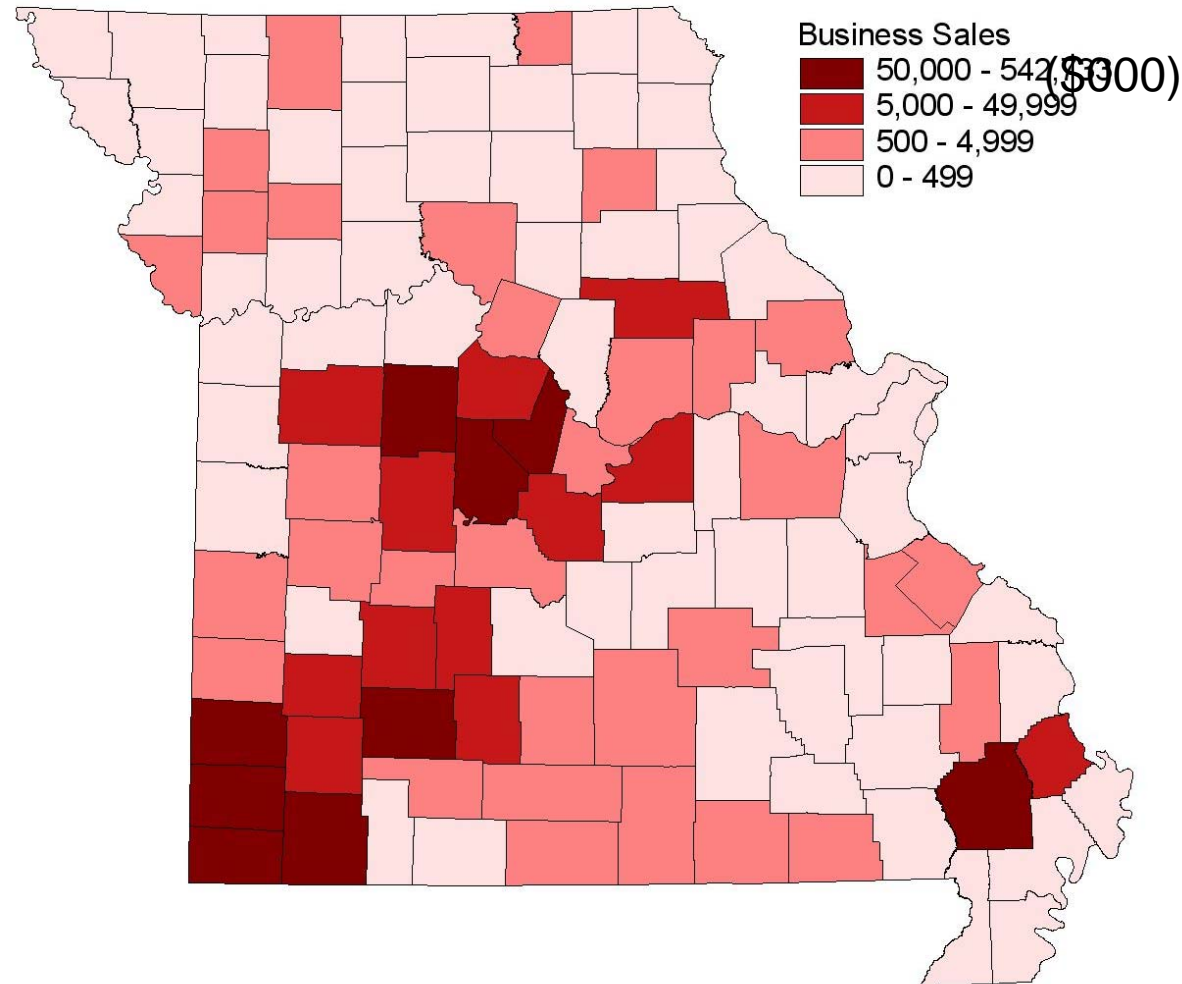


Map Produced by:  
Center for Agricultural, Resource  
and Environmental Systems (CARES),  
August, 2006.

Map Projection:  
Transverse Mercator  
Projection Coordinate System:  
NAD 1983 UTM Zone 15N

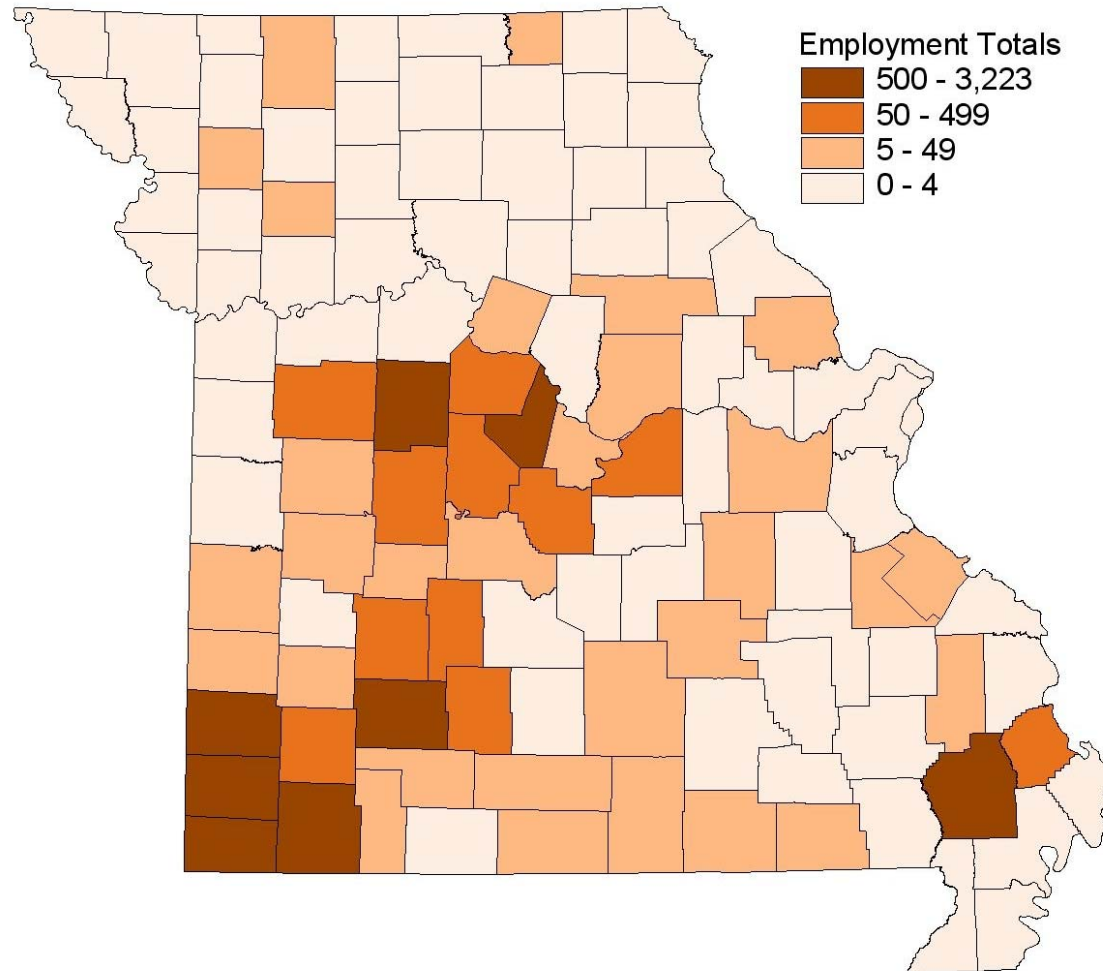


# Poultry Industry Production & Processing: Business Sales by County, 2002



Source: Ron Plain, Impact of Poultry on Missouri's Economy, Unpublished Report to Missouri Senate, Poultry Industry Committee, FAPRI, University of Missouri, 2006.

# Poultry Industry Employment by County



Source: Ron Plain, Impact of Poultry on Missouri's Economy, Unpublished Report to Missouri Senate, Poultry Industry Committee, FAPRI, University of Missouri, 2006.



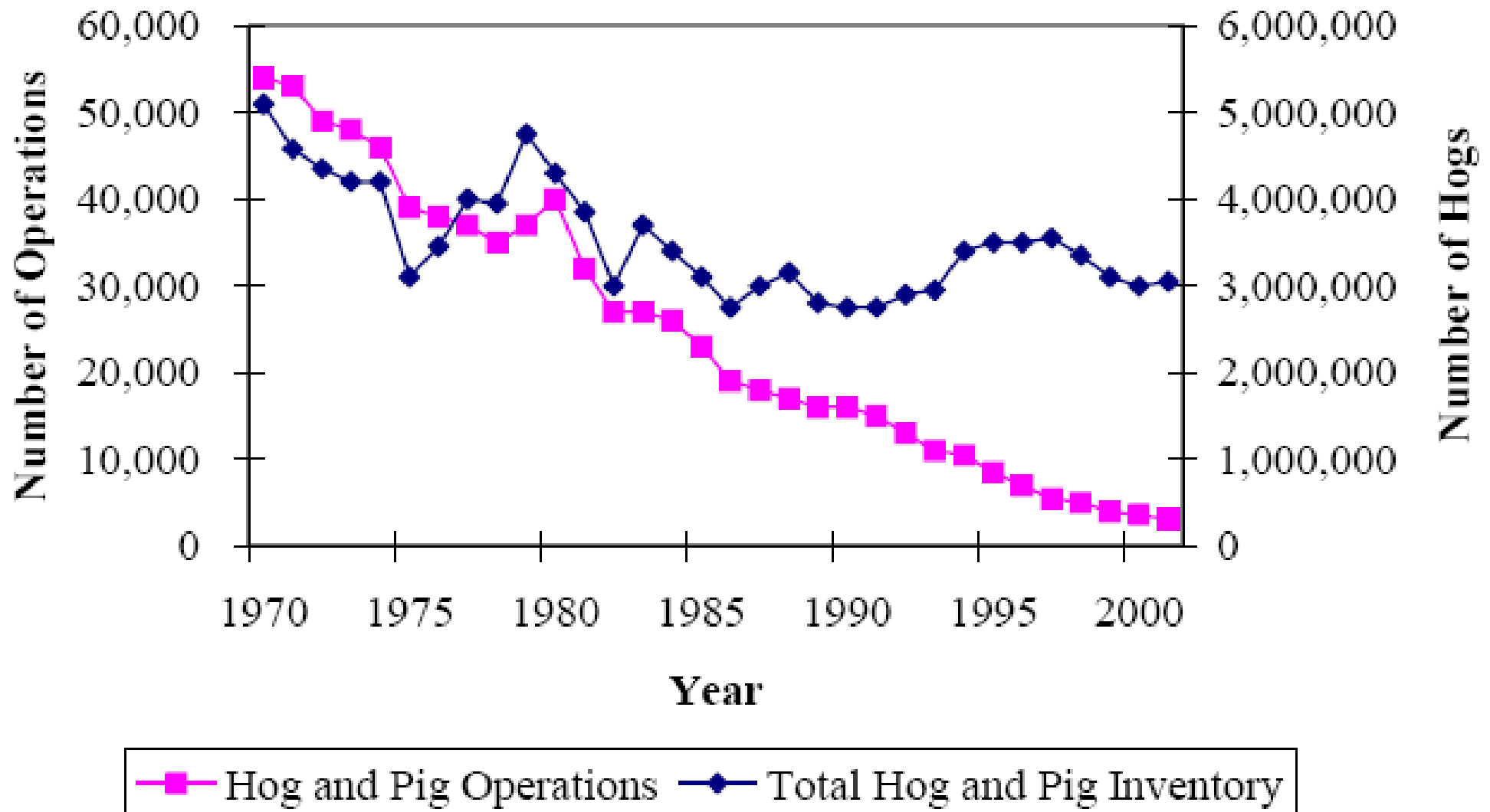
# County Jobs Generated by Missouri Poultry Industry

Rank	County	Poultry&Eggs	Poultry Processing	Total
1	BARRY	71	3,152	3,223
2	MC DONALD	3	3,188	3,191
3	GREENE	0	2,072	2,072
4	JASPER	4	2,013	2,017
5	PETTIS	3	1,954	1,958
6	NEWTON	348	965	1,313
7	STODDARD	1	1,126	1,128
8	MONITEAU	16	603	619
9	LAWRENCE	319	0	319
10	MORGAN	305	0	305
11	MILLER	185	0	185
12	SCOTT	138	0	138
13	OSAGE	134	0	134
14	WEBSTER	132	0	132
15	POLK	123	0	123
16	DALLAS	112	8	120
17	BENTON	118	0	118

# County Value Added by Missouri Poultry Industry

Rank	County	Poultry & Eggs	Poultry Processing	Total
1	Mc Donald	0.1%	39.2%	39.3%
2	Barry	0.6%	15.5%	16.1%
3	Moniteau	0.5%	11.9%	12.4%
4	Morgan	11.4%	0.0%	11.4%
5	Pettis	0.0%	8.3%	8.3%
6	Stoddard	0.0%	8.2%	8.3%
7	Newton	1.6%	3.0%	4.6%
8	Osage	4.3%	0.0%	4.3%
9	Miller	4.0%	0.0%	4.0%
10	Lawrence	3.4%	0.0%	3.4%
11	Benton	3.0%	0.0%	3.0%
12	Dallas	2.8%	0.1%	2.9%
13	Jasper	0.0%	2.5%	2.5%
14	Dade	2.4%	0.0%	2.4%

# Missouri Hog&Pig Inventory and Producers. 1970-2002



Source: The Missouri Swine Audit: An Analysis of Missouri's Competitive Position in the Swine Industry, Boesen, Chris et al., <http://agebb.missouri.edu/commag/swine/audit/index.htm> July 2005

